

# Cruz AI Fabric Controller

## Adaptive Multi-Tenant AI Fabric Orchestration & Management

ASK HOW TO

**CRUZ**  
» into AI

**Cruz AI Fabric Controller – elevate your network management strategy by maximizing ROI while minimizing operational expenses (OpEx)**

### Maximize ROI – Examples

- Streamline design, deployment & operations of AI front and back-end fabrics supporting CLOS, rail, rail-optimized and custom topologies
- Manage inter-GPU networking demands for high-performance AI training workloads
- Maximize utilization of valuable GPU assets with class of AI tenant, ensuring GPUs operate at their full potential in alignment with Enterprise AI strategy
- Deliver rapid deployments, at scale, for training, inference, RAG production environments – orchestrate, deploy, and configure a network swiftly during Day 0 and Day 1 stages of implementation
- Automatic and adaptive congestion control – effectively mitigate networking bottlenecks that degrade GPU performance, ensuring seamless, high-speed connectivity and optimal resource utilization
- Automate complex network configurations and enhance overall performance
- Easily tune backend AI fabrics with simple templates

### Adopting AI Network Orchestration and Operations with Ease

Deploying networks for AI applications and related workloads presents a daunting challenge for many organizations. The rapid evolution of AIOPs demands advanced networking skills and diligent effort from operational teams to rapidly deploy infrastructure and tune it in alignment with their enterprise AI strategy and workload.

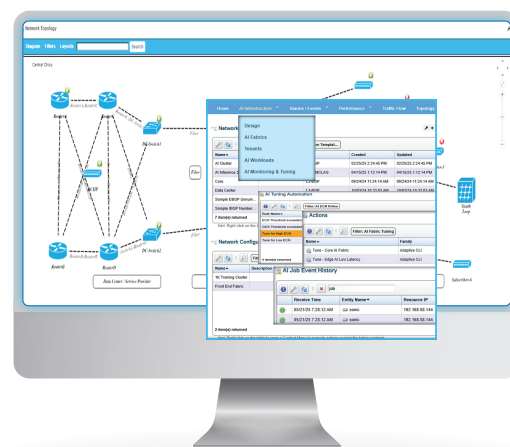
Cruz AI Fabric Controller tackles these pain points by automating processes to drastically simplify design and orchestration of AI front and back-end fabrics, in addition to deployment, monitoring and tuning. It is a critical AI fabric orchestration and management tool for efficient usage of resources and reduction in overall cost of operation.

### Key Features

- AI Fabric Orchestration
- AI-Tiered Tenancy
- Rapid Deployment at Scale
- Granular Control Day 2 Operations
- Integrated Automation with Seeded Scripts
- Enhanced Monitoring
- Performance Enhancement
- AI Workload Management

### Use Cases

- AI Enterprise Data Centers
- AI Factories hosted by a Service Provider
- Telcos using AI Inference / Gen AI on the Edge DC / MEC
- Enterprises using AI Inferences on Campus Edge



### Total Networking Solution

- SONiC - Enterprise or Community
- Cruz Orchestration
- Networking Hardware
- Global Support & Services
- Packaged & Delivered by Dorado