

# DELL EMC OPENMANAGE NM (OMNM)

POWERED BY CRUZ OPERATIONS CENTER

## Powerful converged infrastructure management for the Dell EMC portfolio, multi-vendors, and multi-technologies

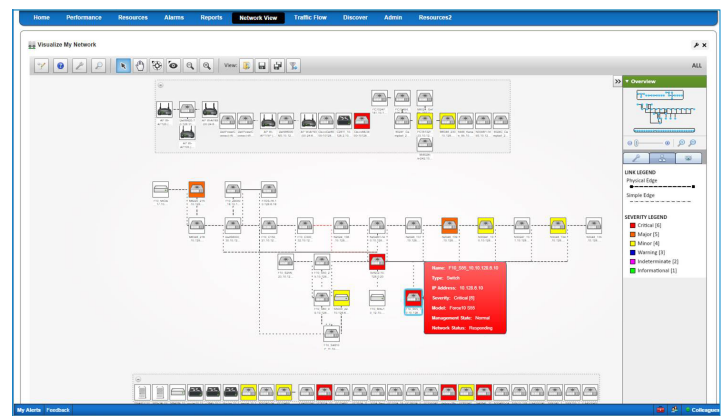
### Simplify, Centralize, and Automate Data Center Operations

Modernizing and growing data centers can be a headache for IT organizations. Keeping track of devices in their environment, how they relate to each other and to other parts of the infrastructure, and what services they affect, can be difficult and time consuming.

**Dell EMC OpenManage NM (OMNM)** is a **unified Enterprise IT management system to collect, configure, analyze, monitor, orchestrate, and automate multi-technology IT infrastructures** including servers, storage, networking, and hyperconverged infrastructures. In addition to comprehensive support of Dell EMC's portfolio, OMNM supports manufacturers like Cisco, HP, Arista, Aerohive, Juniper, Ruckus, Nutanix, Brocade, F5, Lenovo, SonicWALL, and hundreds more.

OMNM is packed with user configurable tools for automated discovery, performance monitoring, configuration backup and restore, firmware management, scheduling, traffic flow analysis, configuration audit capabilities, scripting, and reporting.... all from a single console and affordable price. **OMNM provides the following benefits:**

- **Automate Operational Tasks:** From simple, yet time-consuming, repetitive tasks, to complicated security compliance management, consolidate management to automate operational tasks.
  - **Automate Device Discovery:** Detailed information on devices and their connectivity, with the ability to draw physical and logical topology maps.
  - **Save Money:** Manage lifecycle of converging infrastructures, including deployment, updates, and change control – all with one software product, one license.
  - **Troubleshoot Faster:** Create dashboards with alerts, topology, and monitoring to locate service-affecting problems for faster MTTR.
  - **Get / Stay in Compliance:** Plan and detect changes, automate remediation and provide comprehensive change reporting.
  - **Utilize Your Infrastructure Assets:** Know what you what you have, its location, and report on it with real time inventory to make better technology investment decisions and find underutilized devices/ports.
  - **Multi-tenancy:** Support multiple client organizations from a single instance.
  - **Reduce TCO:** Proactively monitor for problems, automating common configuration actions, and enabling easy firmware deployment – lets administrators focus on more critical activities.
  - **Easily Configure and Manage Groups of Devices:** Configuration changes and firmware deployments can be made to multiple devices in one operation, and schedule operations for pre-determined times.
- Resource Discovery Wizard simplifies discovery of IPv4 and IPv6 elements and other devices
  - Active Performance Monitors allow for proactive customization of performance monitoring
  - Proactive scanning policies for configuration compliance and auditing to track down and correct configuration issues
  - Flexible dashboards for visualizing data
  - Robust performance monitoring and reporting helps identify network bottlenecks
  - Event Management correlation forwards filtered events and traps
  - Automate responses to system or network events, send notifications, and invoke customizable actions
  - Manage and monitor Server Baseboard Management Controllers, iDRAC, iLO, XCC, IMC. iDRAC Server Configuration Profile: backup, restore, and compliance, firmware deployment
  - Flexible integration points with Open API's, automatic REST
  - API support from actions scripts
  - Service Now Integration - Generate tickets from alarms, get status, update
  - Support for overlapping private IP's
  - Manage and monitor Nutanix clusters from TOR switches down to the cluster server nodes iDRAC
  - Warranty reporting and alerts help keep critical infrastructure protected
  - Traffic flow (sFlow) analysis and reporting
  - Advanced scheduling for key tasks such as backup, restore and deploy configuration changes
  - RADIUS, LDAP/AP and CAS authentication integration



### Key Features

## Supports Hundreds of Vendors and Technologies

- **Vendors:** Cisco, HP, Juniper, Arista, Brocade, Aerohive, SonicWALL, Ruckus, Nutanix, Lenovo, Cumulus, Alcatel-Lucent, Aruba, Pluribus, IP Infusion, Extreme, Enterasys, 3COM, SonicWALL, Vyatta, F5, VMware, Windows, Linux, and many others
- **Technologies:** Compute, Server, BMC, Storage, Network, HCI, 5G Wireless, Wifi, Firewalls, Load Balancers, Hypervisors, VMs, Containers, Applications, SDWAN, SDN, Open Networking (ONA), NFV, Environmentals, IP Cameras, IOT Sensors, etc.
- **Comprehensive Dell EMC Infrastructure Support:**
  - Dell EMC Networking (OS6, OS9, OS10) C-Series, N-Series, S-Series, Z-Series and X-Series switches
  - Dell EMC Networking M-Series, FN-Series, and VRTX Modular Networking I/O Modules
  - Dell EMC Networking 8100, 8000, 7000, 6000, 5000 and 3000 series devices
  - Dell EMC Networking W-Series wireless controllers, access points, instant access points
  - Dell EMC Unity Storage Array
  - Dell EMC Flare VNX 8000
  - Dell EMC PowerEdge 12G Rack, 12G Tower, 13G Blade, 13G PE-C, 13G Rack, 13G Tower, 14G Blade, 14G PE-C, 14G Tower, 14G Rack AMD, 14G Rack Server Tower
  - Dell EMC ISILON - NL
  - Dell EMC HyperConverged: XC Series, VxRail, VxRack
  - Proprietary features for best-of-class Dell EMC management and operations. Examples: Bare metal deployment, iDRAC (Redfish); Integrated with backend systems for warranty, support, and administration functions; Integration with OpenManage Essentials
  - Additional Dell EMC and third-party device support included via regular service pack updates

For more details and a complete listing, contact [sales@dell-omnm.com](mailto:sales@dell-omnm.com)

## Supported Operating Systems (64-bit)

- Microsoft Windows Server 2008, 2012, 2016, 2019
- Linux for Redhat and CentOS v6.5/v6.6/v7.5
- Virtual Appliance

## Supported Web Browsers

- Chrome
- Safari
- Firefox
- Internet Explorer

## Deployment Options

- Supports single server as well as high availability deployment options with MySQL and Oracle databases

## Trial, Pricing, and Upgrades

- For a free 30-day trial, visit <http://resources.doradosoftware.com/free-trial-omnm>
- Affordable subscription-based options
- Purchase directly from your Dell EMC Sales Representative or Reseller **or contact [sales@dell-omnm.com](mailto:sales@dell-omnm.com)**

## IT Lifecycle Services for Networking

### Experts, insights and ease

Our highly trained experts, with innovative tools and proven processes, help you transform your IT investments into strategic advantages.



### Plan & Design

Let us analyze your multivendor environment and deliver a comprehensive report and action plan to build upon the existing network and improve performance.



### Deploy & Integrate

Get new wired or wireless network technology installed and configured with ProDeploy. Reduce costs, save time, and get up and running fast.



### Educate

Ensure your staff builds the right skills for long-term success. Get certified on Dell EMC Networking technology and learn how to increase performance and optimize infrastructure.



### Manage & Support

Gain access to technical experts and quickly resolve multivendor networking challenges with ProSupport. Spend less time resolving network issues and more time innovating.



### Optimize

Maximize performance for dynamic IT environments with Dell EMC Optimize. Benefit from in-depth predictive analysis, remote monitoring and a dedicated systems analyst for your network.



### Retire

We can help you resell or retire excess hardware while meeting local regulatory guidelines and acting in an environmentally responsible way.

Learn more at [Dell.com/lifecycle services](http://Dell.com/lifecycle services)

Learn more at [www.Dell-omnm.com](http://www.Dell-omnm.com)